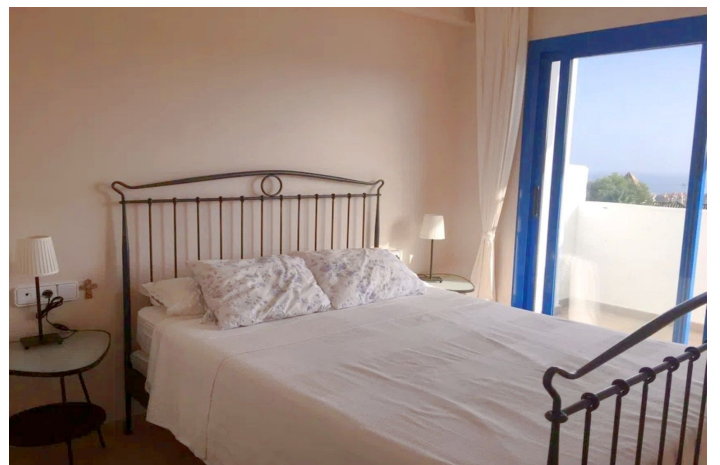


Middle Floor Apartment for sale in La Duquesa, Manilva

276,000 €

Reference: R4907476 Bedrooms: 2 Bathrooms: 2 Build Size: 114m² Terrace: 25m²



Costa del Sol, La Duquesa

APARTMENT IN LA DUQUESA WITH PANORAMIC SEA VIEWS AND EXCELLENT LOCATION

This spectacular apartment, located in the highly sought-after area of La Duquesa, offers the perfect balance of comfort, luxury, and proximity to all essential services. With 114 m² of built space and a spacious 25 m² terrace, this home provides the ideal setting to enjoy a relaxed lifestyle on the Costa del Sol.

Just a 5-minute walk from the beach and next to the renowned Puerto de la Duquesa, this property is perfect for both permanent residence and holiday use. Its strategic location near schools, supermarkets, restaurants, and leisure areas ensures convenience and practicality.

Located in a gated community with multiple pools, expansive green areas, a barbecue area, and 24-hour security, this apartment offers peace of mind and an idyllic environment. Its south-facing orientation ensures sunlight all day and panoramic sea views from the terrace, creating a unique and serene atmosphere.

The apartment features two double bedrooms with built-in wardrobes and two full bathrooms, one of which is en-suite. The fully furnished and equipped kitchen includes a laundry area and connects to a bright living-dining room with direct access to the terrace.

With luxury finishes such as marble floors, Climalit double-glazed windows, electric shutters, and centralized air conditioning, this property is perfect for holiday or permanent living, thanks to its proximity to all amenities.

Additionally, the apartment includes an underground parking space and a storage room in the price, making this an exceptional opportunity. Don't wait to schedule a visit or request more information—your dream home on the Costa del Sol awaits!

Features:

Features

Lift
Private Terrace
Storage Room
24 Hour Reception
Fitted Wardrobes

Views

Sea
Mountain
Panoramic
Garden
Pool
Golf
Beach
Port
Courtyard
Forest
Street

Pool

Communal

Garden

Communal

Category

Reduced
Investment
Golf
Resale

Orientation

South

Setting

Commercial Area
Beachside
Close To Golf
Close To Port
Urbanisation
Close To Sea
Close To Shops
Close To Town
Close To Schools
Suburban
Village
Marina
Close To Marina

Furniture

Optional

Security

Gated Complex
24 Hour Security

Climate Control

Air Conditioning
Central Heating

Condition

Excellent

Kitchen

Fully Fitted

Parking

Garage