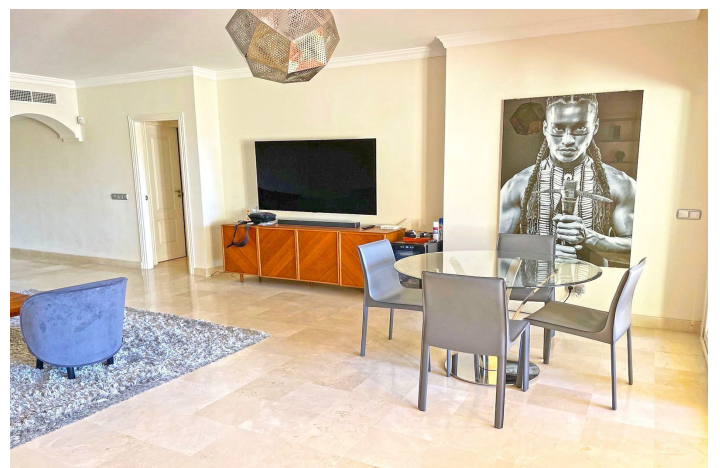
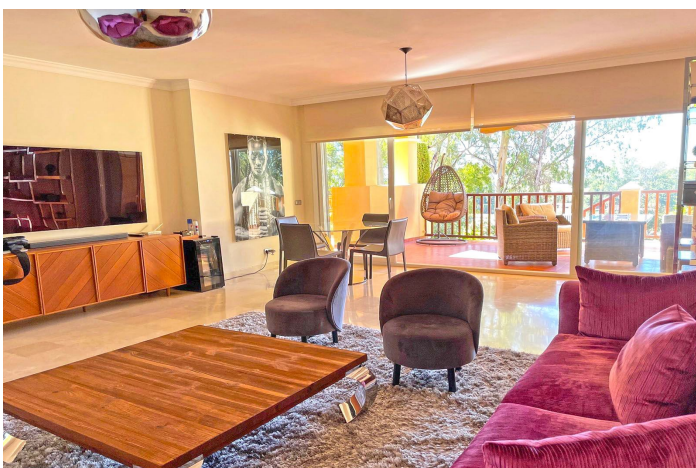


Apartamento Planta Baja en venta en Benahavís, Benahavís

469.000 €

Referencia: R4902289 Dormitorios: 2 Baños: 2 Construido: 120m² Terraza: 40m²



Costa del Sol, Benahavís

This apartment is located in a meticulously maintained community that offers everything you could possibly need for comfortable living. The complex is equipped with a wide range of high-quality amenities, including beautifully landscaped gardens, two large outdoor pools, two children's pools, and a luxurious spa. The spa features a heated indoor pool, Jacuzzi, sauna, Turkish bath, showers, and changing rooms, ensuring relaxation and enjoyment year-round. The gated community also offers 24-hour security for your peace of mind.

Convenience is a key feature of this location. A Mercadona supermarket is just around the corner, and schools are nearby, making it ideal for families. The picturesque mountain village of Benahavís, renowned for its excellent restaurants and charm, is only minutes away. Likewise, the vibrant town of San Pedro is just a short drive, as is the nearest commercial center, where you'll find an array of shops, cafes, and services.

The apartment itself is thoughtfully designed, with all rooms generously proportioned to accommodate every lifestyle. Wide spaces and easy access make it particularly suitable for individuals with mobility challenges or those who value comfort and convenience. The highlight of the home is the large, slightly elevated terrace, offering stunning views over the golf course—perfect for relaxing or entertaining.

In addition to its impeccable surroundings, the area benefits from its proximity to some of the best beaches, top golf courses, and all the attractions the Costa del Sol has to offer. Whether you're looking for a permanent residence or a holiday escape, this property combines a perfect location with luxurious amenities and accessibility to meet every need.

Características:

Características

Terraza

Elevar

Terraza

Trastero

Baño privado

Piso de mármol

Doble acristalamiento

Recepción las 24 horas

Armarios ajustados

Wifi

Gimnasia

Sauna

Pista de tenis

Sala de servicios

Jacuzzi

Fibra óptica

Acceso para personas con movilidad reducida

Vistas

Mar

Montaña

Jardín

Golf

Piscina

Comunal

Con Calefacción

Interior

Piscina para niños

Seguridad

Complejo cerrado

Seguridad de 24 horas

Categoría

Golf

Reventa

Orientación

Sur

Suroeste

Posición

Cerca del golf

Urbanización

Cerca de las tiendas

Cerca de la ciudad

Cerca de las escuelas

Aldea

Muebles

Completamente Amueblada

Aparcamiento

Parking Subterráneo

Comunal

Climatización

Aire acondicionado

Baños u/f/h

Estado

Excelente

Cocina

Cocina Equipada

Servicios Públicos

Teléfono