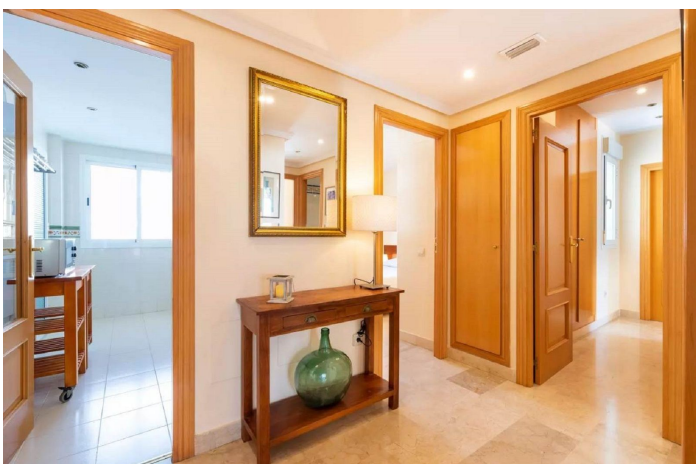


## Middle Floor Apartment for sale in Benalmadena Costa, Benalmádena

485,000 €

Reference: R4896076 Bedrooms: 3 Bathrooms: 2 Build Size: 118m<sup>2</sup> Terrace: 43m<sup>2</sup>





## Costa del Sol, Benalmadena Costa

Bright magnificent 3 bedroom, 2 bathroom apartment located in the sought after Atalaya Golf urbanization, in the area of Nueva Torrequebrada, for those looking for a home that combines spaciousness, comfort and an unbeatable location.

This flat stands out for its generous space and natural luminosity. Upon entering, you will find an elegant entrance hall with a wardrobe that leads to a spacious square-shaped living/dining room, ideal for enjoying time with family and friends. From here, you access a large terrace, perfect for relaxing and enjoying the Mediterranean climate.

The fully fitted and equipped kitchen has a practical utility room, making day-to-day tasks easier. The distribution includes two double bedrooms with fitted wardrobes, a complete bathroom, and the master bedroom with large fitted wardrobes, en-suite bathroom with window, and its own private terrace making it a true retreat.

This fantastic property comes with an underground parking space and a large storage room with good storage capacity.

The building has a lift that connects the flat to the garage floor.

The complex, designed in a charming Mediterranean village style, is an oasis of tranquillity and security. Enjoy its well-kept communal gardens, three swimming pools, sauna, gymnasium and leisure room, all designed for your wellbeing. In addition, the location is unbeatable: just a few steps away you will find bus stops, shops, bars, international restaurants and, of course, the beach.

Don't miss the opportunity to live in a privileged environment, surrounded by nature and with all amenities at your fingertips. This flat in Atalaya Golf is more than a property; it is a lifestyle, contact us for more information and to arrange a viewing!

## Features:

### Features

Covered Terrace  
Lift  
Near Transport  
Private Terrace  
Storage Room  
Ensuite Bathroom  
Marble Flooring  
Double Glazing  
Fitted Wardrobes  
WiFi  
Gym  
Sauna  
Games Room  
Utility Room

### Views

Garden  
Pool

### Pool

Communal  
Garden  
Communal

### Category

Golf  
Luxury  
Resale

### Orientation

South East

### Setting

Close To Golf  
Urbanisation  
Close To Sea  
Close To Shops  
Close To Schools  
Suburban

### Furniture

Part Furnished

### Parking

Underground

### Energy Rating

C

### Climate Control

Air Conditioning  
Central Heating

### Condition

Excellent

### Kitchen

Fully Fitted

### Utilities

Electricity  
Drinkable Water  
Gas

### CO2 Emission Rating

D