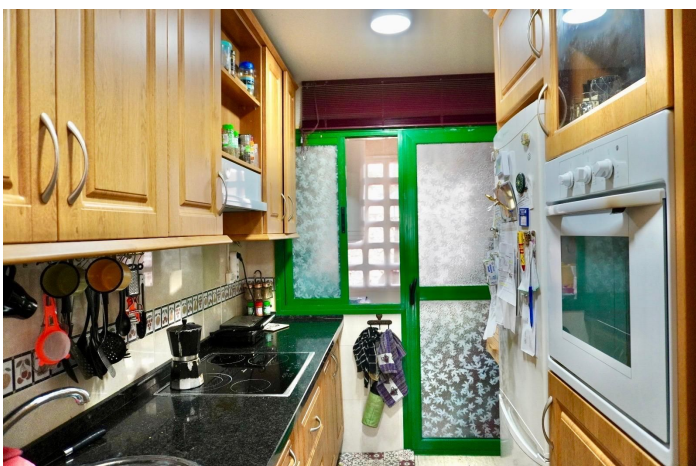


Apartamento Planta Media en venta en Torreblanca, Fuengirola

290.000 €

Referencia: R4897090 Dormitorios: 2 Baños: 2 Construido: 175m² Terraza: 20m²



Costa del Sol, Torreblanca

The flat is located in Torreblanca, only 15 minutes walking distance to the beach. It also has direct access to the path of the dams in Fuengirola, which leads to the promenade.

Distribution and features:

Bedrooms: The flat has two bedrooms, ideal for a couple or a small family.

Bathrooms: There are two full bathrooms, providing comfort and privacy.

Kitchen: The kitchen is independent and is equipped with everything you need.

Laundry room: The flat also has a separate laundry room, making it easy to wash clothes.

Living-dining room: The living-dining room is cosy and has a fireplace, perfect to enjoy cold nights. It is an ideal space to relax and spend time with family and friends.

Terrace: The terrace is one of the highlights of the flat. With about 20 square metres, it offers unobstructed mountain views and enjoys the afternoon sun. It is a perfect place to enjoy the outdoors and sunbathe.

The urbanisation where the flat is located offers a wide range of services and amenities, including:

Paddle tennis court: A perfect place to practice this popular sport.

Swimming pool: A large pool to enjoy the water all year round.

Children's pool: A smaller, safer pool for young children.

Gardens: Beautiful, carefully maintained gardens to enjoy the outdoors and nature.

Underground garage: A safe and secure space to park your vehicle.

Social Club: A 185 square metre community space for socialising and activities.

Características:

Características

Terraza
Elevar
Transporte cercano
Terraza
TV satelital
Baño privado
Armarios ajustados
Wifi
Sala de juegos
Tenis de remo
Pista de tenis
Sala de servicios
Autobús de cortesía
Fibra óptica

Vistas

Montaña
País
Jardín

Piscina

Piscina

Comunal
Piscina para niños

Jardin

Comunal

Servicios Públicos

Electricidad
Agua potable

Orientación

Norte
Este
Oeste
Noreste
Noroeste

Posición

Urbanización
Cerca del mar
País
Cerca de Marina

Muebles

Parte amueblada

Seguridad

Complejo cerrado
Teléfono de entrada

Categoría

Casas de vacaciones
Inversión

Climatización

Aire acondicionado
Hogar

Estado

Se requiere restauración

Cocina

Parcialmente equipado

Aparcamiento

Párking Subterráneo
Cochera
Párking Privado
Párking Cubierto