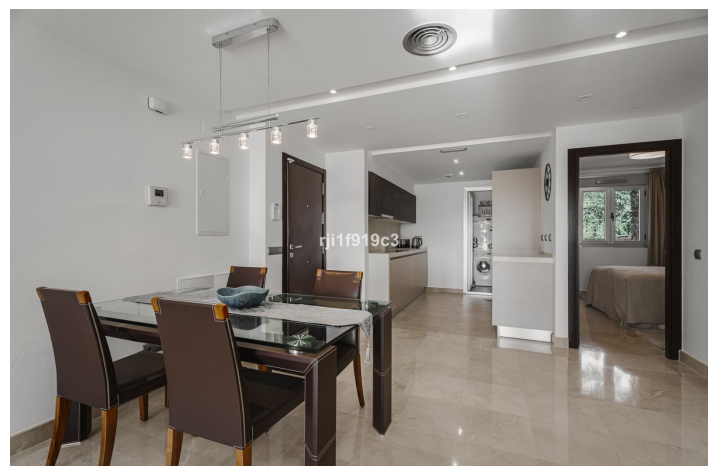


Middle Floor Apartment for sale in La Mairena, Marbella East

335,000 €

Reference: R4892428 Bedrooms: 2 Bathrooms: 2 Build Size: 86m² Terrace: 22m²



Costa del Sol, La Mairena

La Mairena is a residential in a beautiful environment, declared a natural biosphere reserve by UNESCO, and only 7 kilometres from Elviria beach, east of Marbella. The residential is surrounded by a strikingly beautiful cork forest with sea views. La Mairena is a residential area you can enjoy all year round. Having a relaxed atmosphere, undisturbed by any noise from traffic yet close to good-quality road links to the centre of Marbella.

Excellent location: between forests and only 7 kilometres from Elviria beach and with free access to the golf El Soto. Málaga Airport is 40 km away, and just 20 minutes by car to the centre of Marbella. Its proximity to some of the best golf courses in the Costa del Sol allows you to experience the true pleasures of a Mediterranean life style. This community is located in the proximity of the famous German college and just a few minutes walk to El Soto Golf. All owners at this community in La Mairena have access to the nine-hole, par 3 El Soto Golf Course, which also has a gym, padel court, sauna and a clubhouse with a restaurant. Within five minutes drive, you can also play golf on the famous 60-hole La Cala Golf Resort and the 18-hole Santa Maria Golf Country Club.

The apartment has 2 complete bathrooms, an open-plan kitchen and a terrace which is directly accessible from both the lounge and the master bedroom. The apartment is built to the highest standard with first-class finishes including a modern designed integrated kitchen with quartz worktop, thermal and acoustic insulation, air-conditioning, solar powered heater and automatic permanent ventilation system in all rooms. Each block has its own elevator and exterior carpentry finishes in aluminium. There is outdoor private parking. Don't miss this opportunity!

Features:

Features

Lift
Private Terrace
Double Glazing
Gym
Tennis Court

Views

Sea
Mountain
Panoramic
Country
Garden

Pool

Communal

Garden

Communal

Orientation

South

Setting

Close To Golf
Close To Schools

Furniture

Optional

Security

Alarm System
Entry Phone

Climate Control

Air Conditioning
Central Heating

Condition

Excellent

Kitchen

Fully Fitted
Partially Fitted

Parking

Communal