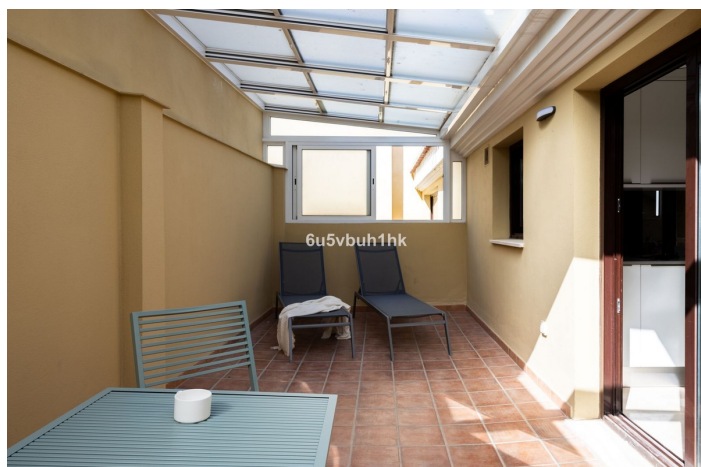
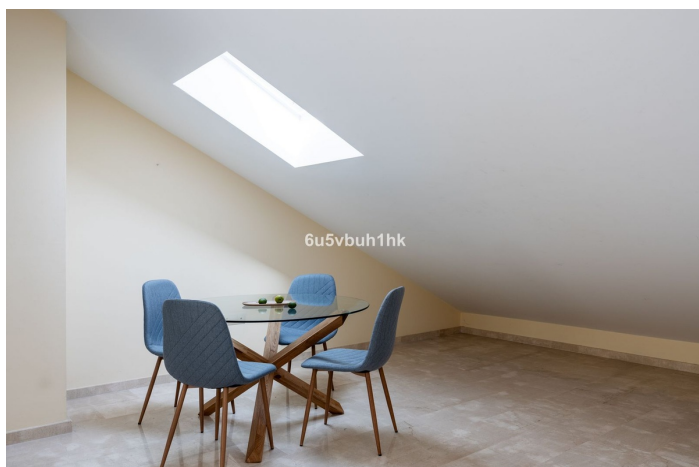




Penthouse for sale in Centro Histórico, Málaga

295,000 €

Reference: R4402396 Bedrooms: 1 Bathrooms: 1 Build Size: 74m² Terrace: 20m²



SIZES ARE APPROXIMATE, ACTUAL MAY VARY.





Costa del Sol, Centro Histórico

Welcome to a cozy and functional studio apartment with tourist license located in the heart of Malaga's historic center. This penthouse studio offers an efficient layout that suits the lifestyle of a modern, on-the-go individual. With 38m² of interior space, this studio makes the most of its design, providing a comfortable living area that seamlessly combines the living, sleeping, and dining spaces. The sloping ceiling and Velux windows create a unique atmosphere, letting in natural light and adding a touch of character. Step out onto the 17m² glass-covered terrace, a versatile space that can be your personal sun-soaked spot or an adaptable area for work or relaxation. Whether you're catching some rays or need an extra nook for studying or even a home office setup, this space can cater to your needs. The apartment features a neat white kitchen that's designed to be functional yet unobtrusive. A spacious bathroom completes the package, offering all the essentials you need for daily living. Storage has been smartly integrated, helping you keep your space organized and clutter-free. The added benefit of a tourist license adds potential for generating extra income if you decide to rent it out when you're not using it. Situated in Malaga's historic center, this studio offers convenient access to the city's cultural scene, dining options, and entertainment. Whether you're a tech professional seeking a practical weekday crash pad, a student in need of a comfortable study space, or someone who simply wants a weekend escape in a lively city, this studio apartment has something to offer. Ready to explore the possibilities? Get in touch with us today to discover how this adaptable studio apartment can fit your lifestyle and investment goals.



Features:

Features

Covered Terrace
Lift
Near Transport
Private Terrace
Fitted Wardrobes

Setting

Close To Port
Close To Shops
Close To Town
Close To Schools

Furniture

Fully Furnished