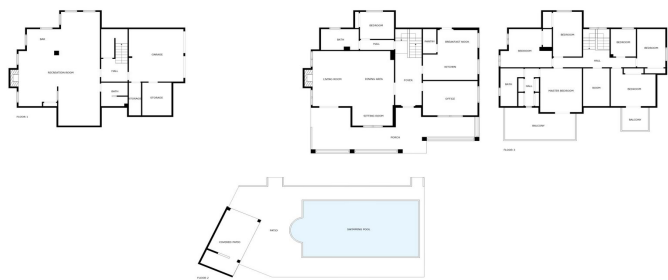


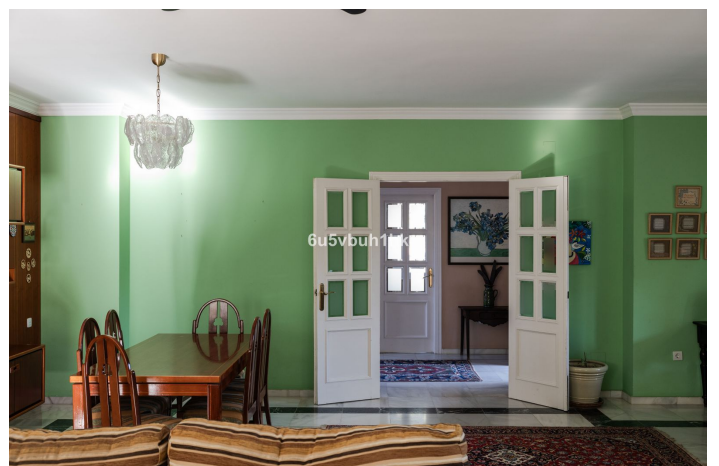
# Rækkehus til salg i Alhaurín de la Torre, Alhaurín de la Torre

795.000 €

Reference: R4884943    Soveværelser: 8    Badeværelser: 4    Plot Size: 1.427m<sup>2</sup>    Byg Størrelse: 420m<sup>2</sup>



SIZES ARE APPROXIMATE, ACTUAL MAY VARY.





## Valle del Guadalhorce, Alhaurín de la Torre

Located in the elevated neighbourhood of El Lagar in the popular village of Alhaurín de la Torre, this house is an exceptional opportunity for those seeking both space and tranquility. Perfectly suited for large families, this home combines a serene residential setting with easy access to all essentials and just a 10-minute drive to the nearest beach, Plaza Mayor shopping mall, and Málaga Airport. The property, with its traditional feeling and decoration, presents beautiful and well kept outside areas, such as a large swimming pool, gardens and covered terraces where you can enjoy some shade during the hot summer days. The home is thoughtfully developed over three levels: When entering the house, there is a spacious and inviting living room featuring a cozy, functional fireplace, perfect for family gatherings. Additionally, there is a fully fitted kitchen with dining area, a study, a bright guest bedroom, and a full bathroom on this same floor. The upper level boasts six bedrooms and two bathrooms, one of which is ensuite and belongs to the master bedroom. Two of the bedrooms have direct access to southeast-facing terraces, providing panoramic views of Málaga's cityscape and the surrounding mountains. On the lower level of the property, there is a generous living area with fireplace and a small kitchen, ideal to spend the winter evenings with family and friends. On the same level there are also a bathroom, 3 storage areas and a garage for 2 cars. Don't miss the chance to make this exquisite family residence your new home in the heart of Alhaurín de la Torre.

## Funktioner:

### Funktioner

Dækket terrasse  
I nærheden af transport  
Privat terrasse  
Opbevaringsrum  
Ensuite badeværelse  
Dobbeltvindue  
Monterede garderober  
Solarium  
Spillelokale  
Gæstelejlighed  
Værktøjsrum  
Bar  
Grill  
I nærheden af kirken  
Kælder  
Fiberoptik

### Indstilling

Tæt på butikker  
Tæt på byen  
Tæt på skoler

### Hjælpeprogrammer

Telefon

### Klimakontrol

Ildsted

### Pool

Privat

### Synspunkter

Bjerg  
Panoramisk  
Land  
Have  
Pool

### Møbel

Fuldt møbleret