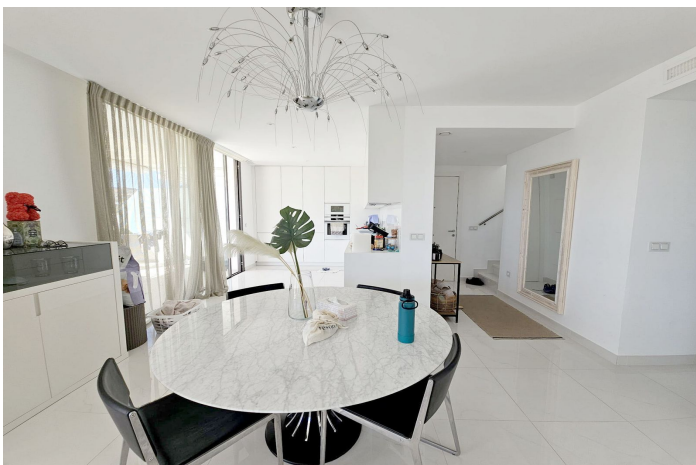


Penthouse Duplex te huur in Atalaya, Estepona

995.000 - 4.000 €

Referentie: R4829974 Slaapkamers: 3 Badkamers: 2 Perceelgrootte: 135m² Terras: 68m²



Costa del Sol, Atalaya

Six Month Rental!!

Stunning 3-Bedroom Duplex Penthouse with Large Roof Solarium - Available for 6 months rent immediately.

Nestled in this prestigious urbanisation, this luxurious 3-bedroom duplex penthouse offers the perfect blend of modern comfort and outdoor living. Spread over two levels, the property boasts spacious interiors, a large private roof solarium with breathtaking views, and access to premium communal amenities.

Key Features:

3 Spacious Bedrooms: Each bedroom is designed with ample wardrobe space and large windows that fill the rooms with natural light.

Expansive Roof Solarium: Ideal for outdoor dining, lounging, or entertaining guests, this private rooftop space offers panoramic views of the surrounding area.

Modern Kitchen: Fully equipped with high-end appliances, sleek cabinetry, and plenty of storage, perfect for home chefs.

Open-Plan Living and Dining Area: A stylish, open layout with access to a private terrace, allowing for easy indoor-outdoor flow.

Luxury Bathrooms: The property includes contemporary bathrooms, featuring sleek finishes and high-quality fittings.

Urbanisation Amenities:

Indoor and Outdoor Pools: Residents can enjoy both heated indoor and outdoor swimming pools, perfect for year-round use.

Landscaped Gardens: Beautifully maintained communal areas that offer a serene and peaceful atmosphere.

24-Hour Security: Gated community with secure access, ensuring a safe and private living environment.

Located in a sought-after area, close to golf courses, restaurants, and shopping, this penthouse is ideal for those seeking a luxurious long-term rental with all the comforts of modern living.

Don't miss this opportunity to make this beautiful property your new home!

Kenmerken:

Extra's

Overdekt terras
Tillen
Privéterras
Marmeren vloeren
Dubbele beglazing
Solarium

Uitzicht

Panoramisch

Zwembad

Gemeenschappelijk
Binnen-

Tuin

Gemeenschappelijk

Categorie

Luxe

Zonorientatie

West
Zuidwesten

Ligging

Dicht bij golf
Dicht bij zee
Dicht bij winkels
Dicht bij scholen

Meubilering

Volledig ingericht

Beveiliging

Gated Complex

Klimaatbeheersing

Airconditioning
Hete a/c

Huidige Staat

Uitstekend

Keuken

Volledig passend

Parkeergelegenheid

Ondergronds