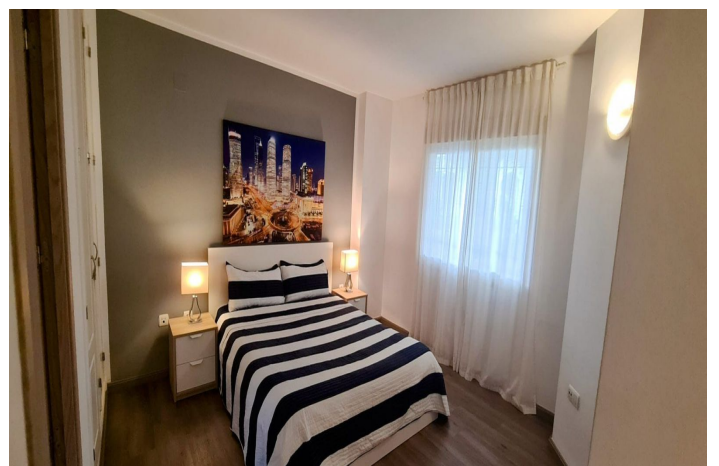
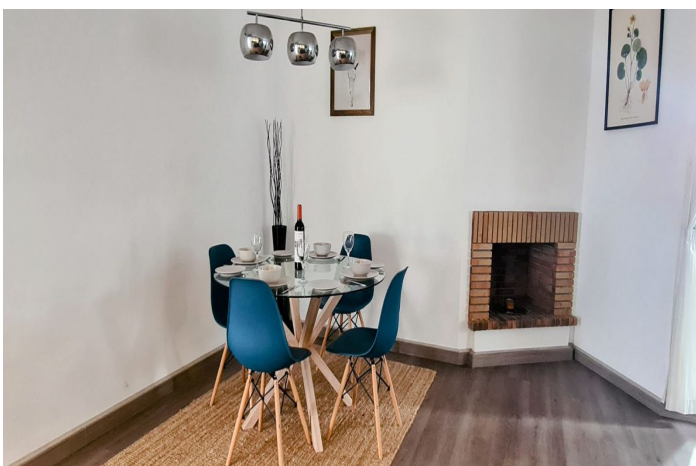


Tussenverdieping Appartement te huur in Nueva Andalucía, Marbella

2.000 - 2.000 €

Referentie: R4853254 Slaapkamers: 2 Badkamers: 2 Plotgrootte: 115m² Perceelgrootte: 115m²



Costa del Sol, Nueva Andalucía

Nestled in the heart of Los Naranjos, Nueva Andalucía, this exquisite apartment offers a harmonious blend of convenience, perfect for those seeking a temporary retreat in the vibrant Costa Del Sol. With its prime location, this property is a gateway to the best of Marbella, offering proximity to pristine beaches, world-class golf courses, and a plethora of dining and shopping options.

This beautifully appointed apartment boasts two spacious bedrooms and two well-designed bathrooms, providing ample space for relaxation and comfort. The interior spans 115m², offering a generous living area that is both stylish and functional. The fully fitted kitchen is equipped with modern appliances, ensuring a seamless culinary experience, while the adjacent dining room provides a perfect setting for entertaining guests. The living room, with its tasteful furnishings, offers a cosy retreat for unwinding after a day of exploration.

Tenants will appreciate the apartment's thoughtful design, which includes a private terrace for enjoying the Mediterranean climate and a covered terrace for al fresco dining. The communal pool and garden offer a serene escape, while the private garage ensures convenience and security. The property is situated within a gated community, providing peace of mind and a sense of exclusivity.

The apartment's location is truly unparalleled, with amenities, transport links, and recreational facilities all within easy reach. Whether it's a day at the beach, a round of golf, or a leisurely stroll through the town, everything is conveniently close. The property is in good condition and comes fully furnished, ready for immediate occupancy.

Kenmerken:

Extra's

Overdekt terras

Nabij transport

Privéterras

Gemonteerde kasten

Bijkeuken

Barbecu

Uitzicht

Tuin

Zwembad

Gemeenschappelijk

Tuin

Gemeenschappelijk

CO2 Emission Rating

D

Zonorientatie

Zuiden

Ligging

Dicht bij golf

Dicht bij de poort

Dicht bij zee

Dicht bij winkels

Dicht bij de stad

Dicht bij scholen

Meubilering

Volledig ingericht

Parkeergelegenheid

Privé

Klimaatbeheersing

Airconditioning

Huidige Staat

Goed

Keuken

Volledig passend

Gedeeltelijk gepast

Energiebeoordeling

C